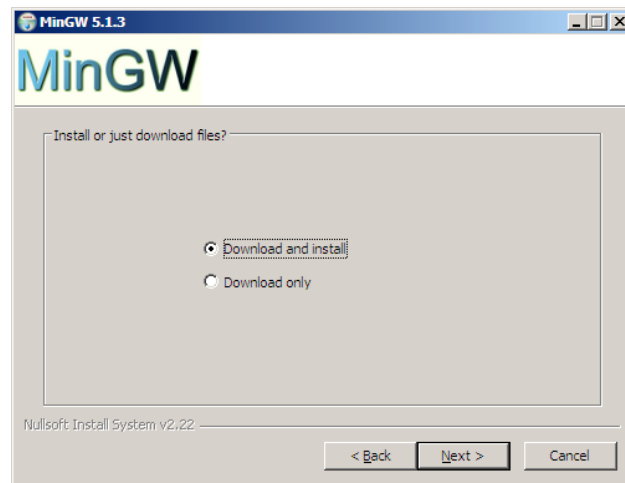


Setting Up Eclipse CDT on Windows (with thanks to Max Berger)

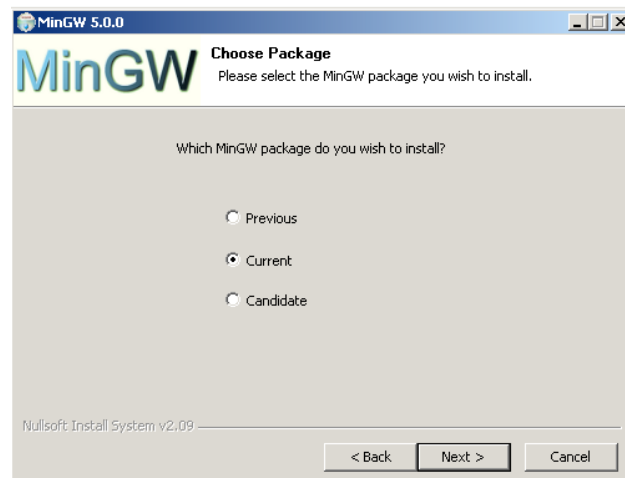
Note: You must first download the installation files referred to in this document from the Computer Science website.

Step 1: Install MinGW

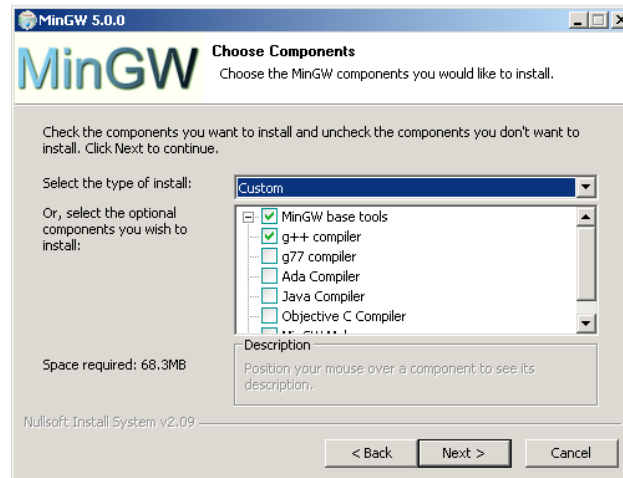
Double-click the file called **MinGW.zip**, and choose **Extract all files**. By default the Extraction Wizard will extract to the MinGW folder. Run (double-click) the file called **MinGW-5.1.3.exe**. Choose **Download and install**.



When asked which MinGW package to install, choose **Current**.



The installer will ask which components to install. Make sure you have the **g++ compiler** checked.



Do not change the default install folder, **C:\MinGw**.

Step 2: Install MSYS

Run the file called **MSYS-1.0.10.exe**. Accept all the default options until you see a black and white window asking for postinstall.

```
C:\WINEXPE\system32\cmd.exe
C:\msys\1.0\postinstall>PATH ..\bin;C:\Program Files\Mozilla Firefox\;C:\WINEXPE
\system32;C:\WINEXPE;C:\WINEXPE\system32\Wbem;C:\WINEXPE\system32;C:\WINEXPE;C:\
WINEXPE\system32\Wbem;D:\Javalib\apache-ant-1.6.2\bin
C:\msys\1.0\postinstall>..\bin\sh.exe pi.sh
This is a post install process that will try to normalize between
your MinGW install if any as well as your previous MSYS installs
if any. I don't have any traps as aborts will not hurt anything.
Do you wish to continue with the post install? [yn] y
```

Type **y** and then press Enter. The next question asks if MinGW is installed.

```
C:\WINEXPE\system32\cmd.exe

C:\msys\1.0\postinstall>PATH ..\bin;C:\Program Files\Mozilla Firefox\;C:\WINEXPE\system32;C:\WINEXPE;C:\WINEXPE\System32\Wbem;C:\WINEXPE\system32;C:\WINEXPE\System32\Wbem;D:\JavaLib\apache-ant-1.6.2\bin

C:\msys\1.0\postinstall>..\bin\sh.exe pi.sh

This is a post install process that will try to normalize between your MinGW install if any as well as your previous MSYS installs if any. I don't have any traps as aborts will not hurt anything. Do you wish to continue with the post install? [yn] y

Do you have MinGW installed? [yn] _
```

Again type **y** and press Enter. The next question asks where MinGW is installed, BUT using a forward slash instead of a backward slash.

```
C:\WINEXPE\system32\cmd.exe

C:\msys\1.0\postinstall>PATH ..\bin;C:\Program Files\Mozilla Firefox\;C:\WINEXPE\system32;C:\WINEXPE;C:\WINEXPE\System32\Wbem;C:\WINEXPE\system32;C:\WINEXPE\System32\Wbem;D:\JavaLib\apache-ant-1.6.2\bin

C:\msys\1.0\postinstall>..\bin\sh.exe pi.sh

This is a post install process that will try to normalize between your MinGW install if any as well as your previous MSYS installs if any. I don't have any traps as aborts will not hurt anything. Do you wish to continue with the post install? [yn] y

Do you have MinGW installed? [yn] y

Please answer the following in the form of c:/foo/bar.
Where is your MinGW installation?
```

Type **C:/MinGW** The last question just asks you to press any key.

```
C:\WINEXPE\system32\cmd.exe

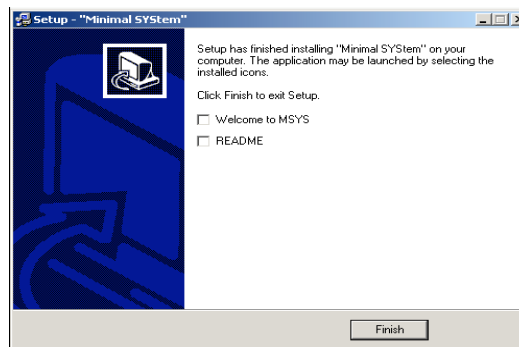
Please answer the following in the form of c:/foo/bar.
Where is your MinGW installation? C:/MinGW

Creating /etc/fstab with mingw mount bindings.
Normalizing your MSYS environment.

You have script /bin/awk
You have script /bin/cmd
You have script /bin/echo
You have script /bin/egrep
You have script /bin/ex
You have script /bin/fgrep
You have script /bin/printf
You have script /bin/pwd
You have script /bin/rvi
You have script /bin/rview
You have script /bin/rvim
You have script /bin/vi
You have script /bin/view

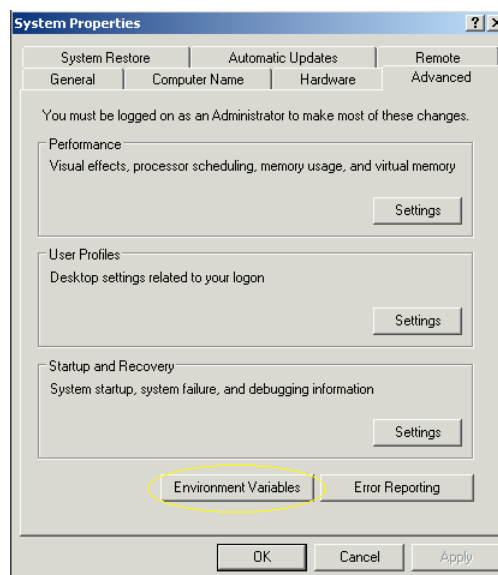
Oh joy, you do not have C:/MinGW/bin/make.exe. Keep it that way.
C:\msys\1.0\postinstall>pause
Press any key to continue . . .
```

Press any key to continue, and then click **Finish** to conclude the MSYS installation.



Step 3: Set up the Windows environment variables

Right click on **My Computer** and select **Properties**. Select the **Advanced** tab.



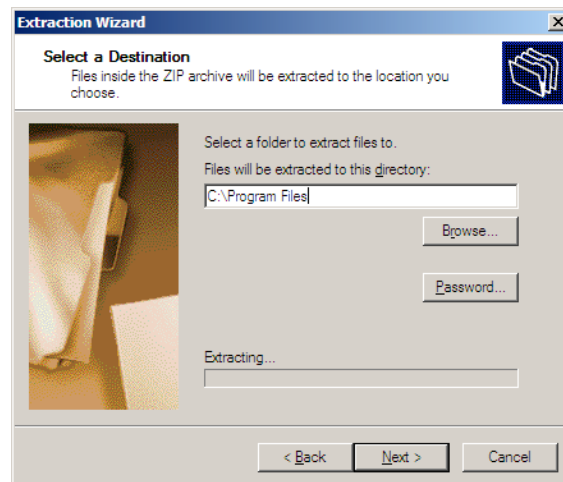
Click on **Environment Variables**. Look for the variable **Path** in the section called **System Variables**. Click on it and click **Edit**. Click at the end of the current path (make sure it is no longer highlighted) and append **;C:\msys\1.0\bin;C:\MinGW\bin** to the current path and click **OK**. Click **OK** twice more to exit My Computer Properties.

Step 4: Set up Java 6

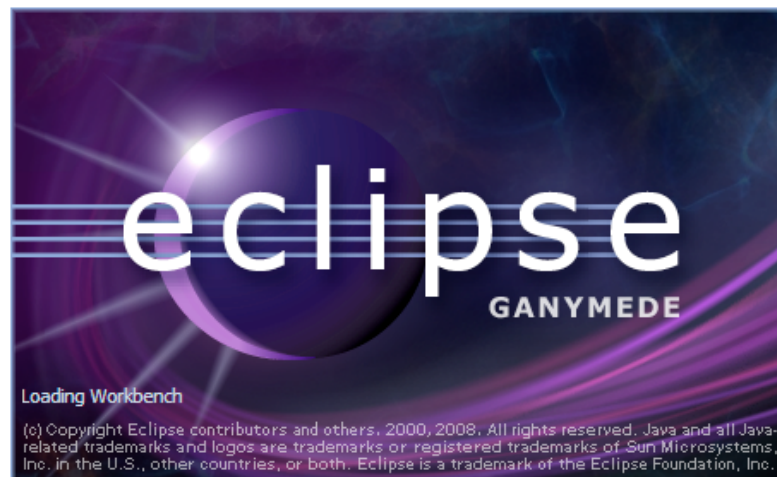
If you do not have Java installed on your computer, run the file called **jdk-6u2-windows-i586p-p.exe**. Accept the defaults by clicking **Next** each time it appears. The installation will probably take several minutes as Java 6 and Update 2 are installed.

Step 5: Set up Eclipse

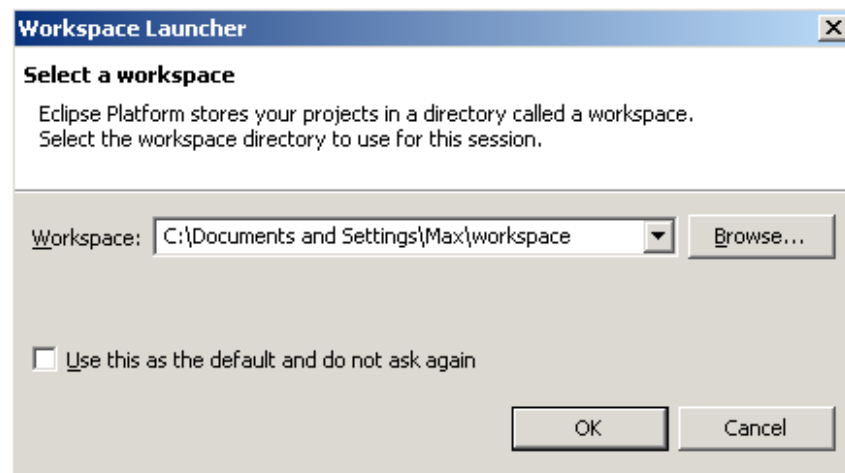
Double-click the file called **eclipse-cpp-ganymede-SR2-win32.zip** and choose **Extract all files**. When it asks you to choose a destination for the extracted files, type **C:\Program Files** or browse to it. The installer will create a file called Eclipse in the Program Files folder.



Double-click the **eclipse.exe** icon to start Eclipse. After the eclipse splash screen,



you will be asked choose a workspace.



Click **OK**.

Close the Welcome screen, and you are ready to start your first C++ project.